

ProCleaner
C100



Washing Robot for Washing Crop Crates

One person can wash up to 40 boxes per hour

Technical Brochure

- Specifications
- How it works



WASH POWER™
Make cleaning easy

Washpower A/S

Elmevej 8 | 7870 Roslev, Denmark
+45 96 96 10 15 | info@washpower.com

www.washpower.com



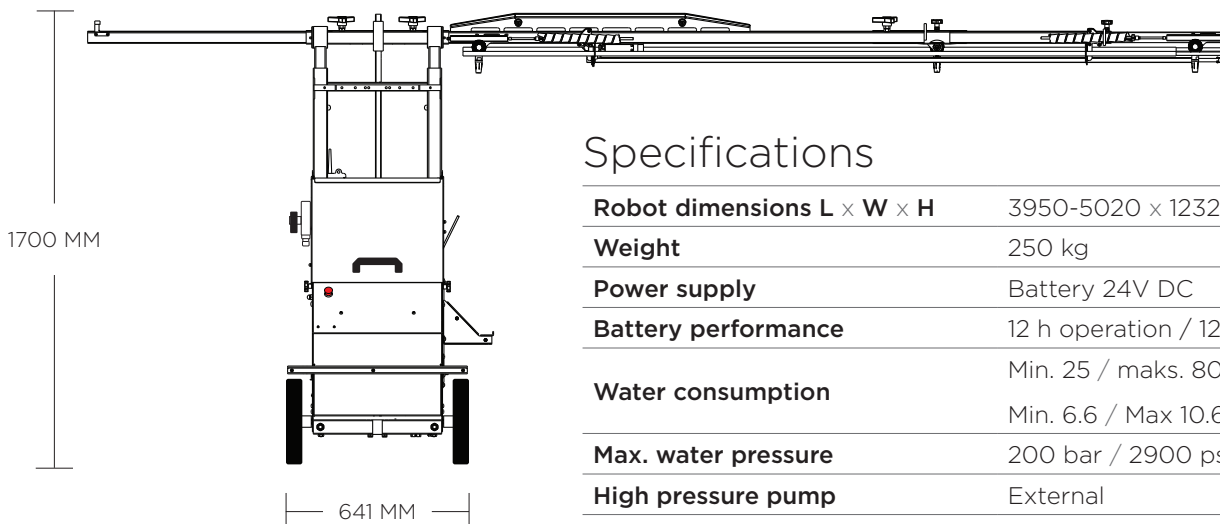
The C100

With automated washing of potato boxes, one person can wash up to 40 boxes per hour and manage the entire process from a forklift. This setup provides significant savings in labor hours, while also greatly improving the work environment, eliminating the need for many strenuous hours with a pressure washer.

The C100 is initially loaded with 8 boxes. Once the first 4 are cleaned, they are removed, and replaced with 4 new dirty boxes. The process continues, allowing for a seamless exchange as the next 4 clean boxes are swapped out with dirty ones.

With the C100, Washpower automates and elevates the efficiency of washing boxes used in agriculture to new heights.

3950 - 5020 MM



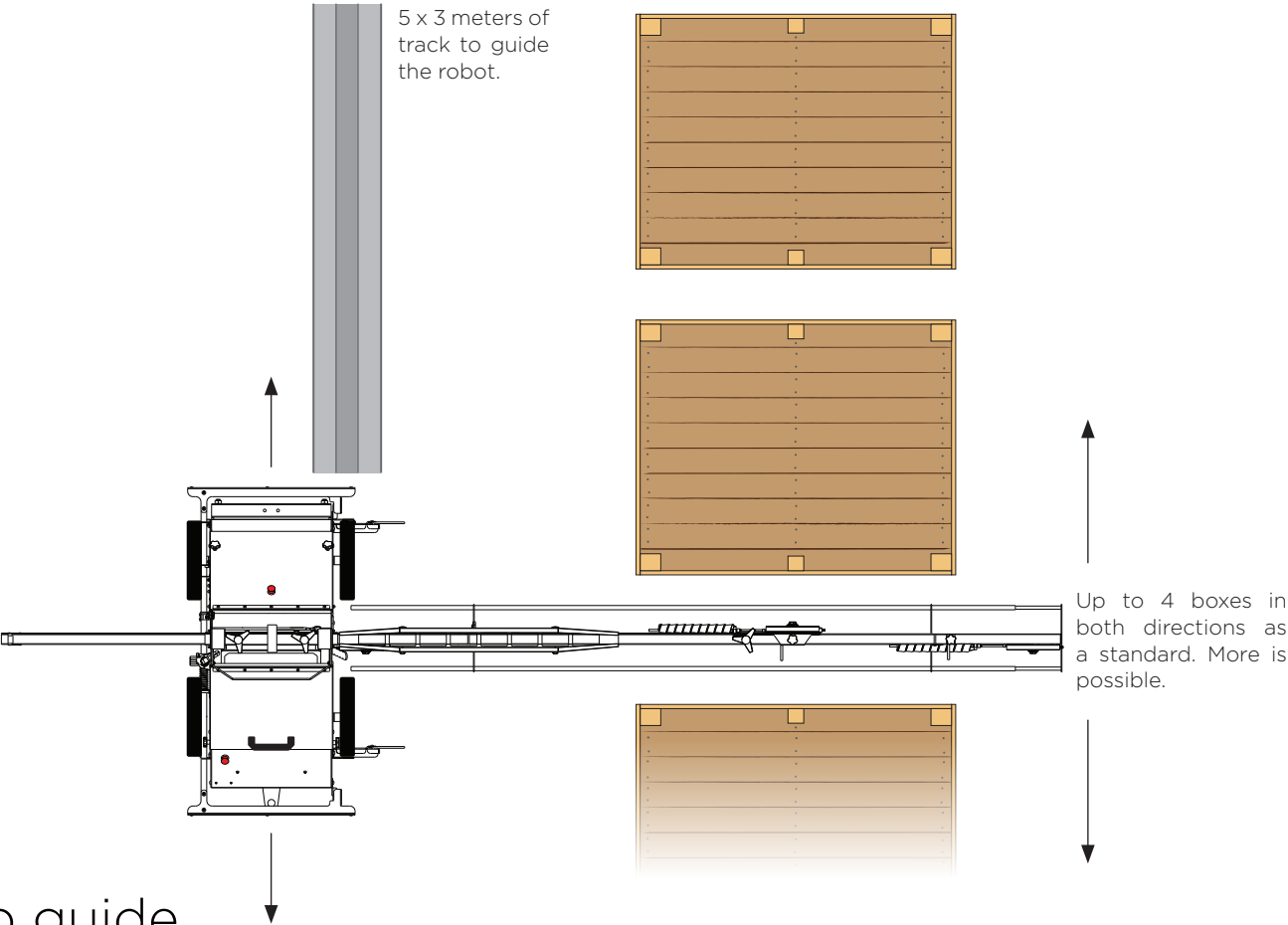
Specifications

Robot dimensions L x W x H	3950-5020 x 1232 x 1700 mm
Weight	250 kg
Power supply	Battery 24V DC
Battery performance	12 h operation / 12 h charge
Water consumption	Min. 25 / maks. 80 l/m
	Min. 6.6 / Max 10.6 gallon/m
Max. water pressure	200 bar / 2900 psi
High pressure pump	External
Max. water temperature	60° C

How it works

Washing setup seen from above and up to 4 boxes in each direction.

Three nozzles: Two washing on the outside of the boxes from each side and one washing from the middle, washing the inside of the boxes.



Pump guide

In this table it is shown how the pump capacity affects the numbers of boxes per hour. If the total pump capacity is not sufficient, then the robot needs to run two cycles to wash the boxes, one cycle focusing on washing the boxes on the outside and then another wash cycle to focus on the inside afterwards.

Pump capacity - Value in liters per minute	One or two washing cycles for complete wash	Estimated boxes per hour	Nozzle requirements
1 x 20 liters pump	2 washing cycles	20 boxes per hour	Use 20 liter nozzle for inside / middle
2 x 20 liters pump	2 washing cycles	25-30 boxes per hour	Standard nozzle
1 x 30 liters pump	2 washing cycles	20-25 boxes per hour	Standard nozzle
2 x 30 liters pump	1 to 2 washing cycles	30-40 boxes per hour	If only one cycle, then use 20 liter nozzles
1 x 36 liters pump	2 washing cycles	25-30 boxes per hour	Standard nozzle
2 x 36 liters pump	1 washing cycle	35-40 boxes per hour	Standard nozzle
1 x 40 liters pump	2 washing cycle	25-30 boxes per hour	Standard nozzle
2 x 40 liters pump	1 washing cycle	40-45 boxes per hour	Standard nozzle



WASH POWERTM
Make cleaning easy



Watch video



www.washpower.com